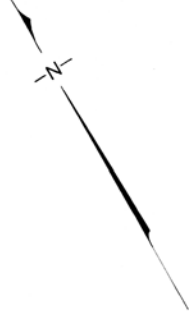


Approximate location of where Steven Truscott claimed to be when he saw Lynne Harper get picked up by car

Approximate location of the car that Steven Truscott claimed to see pick up Lynne Harper

Approximate location of Gordon Logan on rock in river

Approximate location of where Lynne Harper's body was found



PLAN

OF PART OF THE TOWNSHIP OF TUCKERSMITH
COUNTY OF HURON

ORIGINAL PLAN SCALE : 1" = 300'

COPY NOT TO SCALE

Plan prepared from survey
made June 12th and June 15, 1959

B.M. Ross
B. M. ROSS O.L.S.
Geometer, Ontario
July 2, 1959

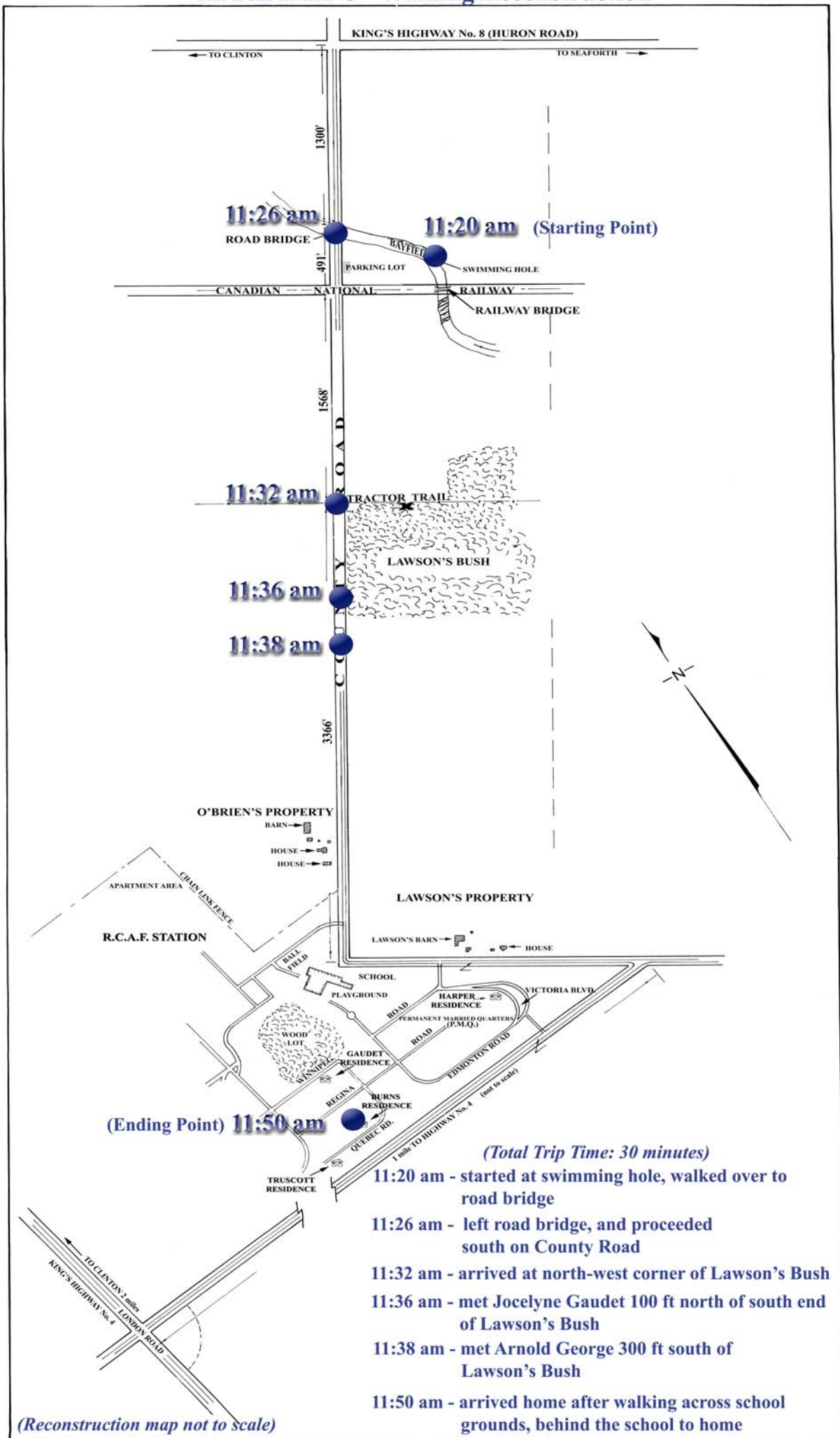
APPENDIX 1 - MAP OF THE COUNTY ROAD AND SURROUNDING AREA



APPENDIX 2

Trial exhibit of aerial photograph of the County Road and surrounding area, looking north over the R.C.A.F. Station (Trial Exhibit #11)

APPENDIX 3 - Walking Reconstruction *



(Ending Point) 11:50 am

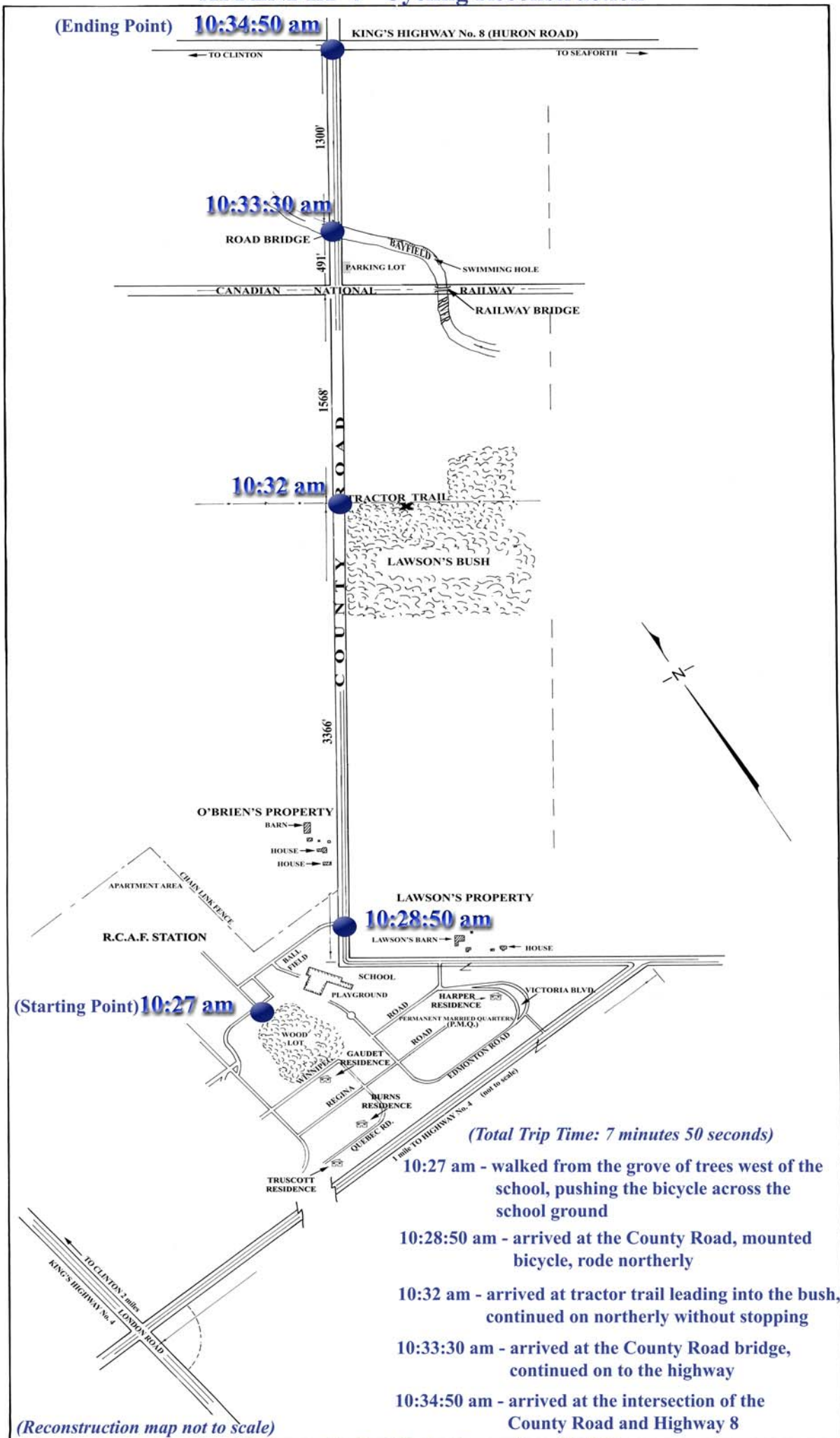
(Total Trip Time: 30 minutes)

- 11:20 am - started at swimming hole, walked over to road bridge
- 11:26 am - left road bridge, and proceeded south on County Road
- 11:32 am - arrived at north-west corner of Lawson's Bush
- 11:36 am - met Jocelyne Gaudet 100 ft north of south end of Lawson's Bush
- 11:38 am - met Arnold George 300 ft south of Lawson's Bush
- 11:50 am - arrived home after walking across school grounds, behind the school to home

(Reconstruction map not to scale)

* Performed by Philip Burns on June 20, 1959

APPENDIX 4 - Cycling Reconstruction*



(Starting Point) 10:27 am

(Ending Point) 10:34:50 am

10:28:50 am

10:33:30 am

10:32 am

(Total Trip Time: 7 minutes 50 seconds)

- 10:27 am - walked from the grove of trees west of the school, pushing the bicycle across the school ground
- 10:28:50 am - arrived at the County Road, mounted bicycle, rode northerly
- 10:32 am - arrived at tractor trail leading into the bush, continued on northerly without stopping
- 10:33:30 am - arrived at the County Road bridge, continued on to the highway
- 10:34:50 am - arrived at the intersection of the County Road and Highway 8

(Reconstruction map not to scale)

*Performed by Paul Desjardine on June 20, 1959

Appendix 5

An Alternative County Road Theory Consistent with the Defence Position

We provide here a credible alternative theory of the County Road evidence that fits comfortably with the circumstantial evidence and that supports the appellant's contention that he dropped off Lynne at Highway 8. The details of the credible alternative theory¹ are as follows:

i) Gillette and Glover's travels on the County Road before 7:00 p.m.

- Gillette and Glover leave the bridge between 6:45 and 6:55 p.m. and cycle home to retrieve their fishing rods. They see no one on the County Road at that time.
- Gillette returns to the bridge alone. He is seen by Mrs. Dunkin², who follows him in her car until the railway tracks. Gillette does not see Burns, Gellatly, George or Gaudet on his return trip. He arrives back at the bridge at around 7:00 p.m.

ii) Burns' trip south along the County Road

- Burns leaves from the bridge at about 7:00 p.m. and begins walking south to the Station.
- Mrs. Dunkin arrives at the railway tracks within a minute or two of 7:00 p.m. and sees Burns, between the bridge and the railway tracks, walking south.
- Burns meets Gaudet at about 7:10 p.m., 100 feet north of the south end of Lawson's Bush. Gaudet has not yet been to Lawson's barn, but rather headed first to the supposed "meeting place".³
- Gaudet proceeds north on foot towards the tractor trail. The tractor trail is 800 feet north of the point where she and Burns meet.

¹ The alternative theory relies on the times recorded in the walking and cycling reconstructions performed by Burns and Desjardine as found in Appendices 3 and 4. It uses as markers times given by various witnesses who checked their watches or clocks, and whose times, according to the Crown, "were therefore inherently more reliable than the evidence of those witnesses without an ability to fix their time estimates."

² Mrs. Dunkin's June 20 statement to the police indicates that she followed Gillette to the bridge. She advised that "on the way [to the bridge] I caught up to a boy riding a bicycle and going in the same direction near the railway tracks, and followed him until I turned off to park. He was carrying a fishing pole". She described the boy as "wearing a blue shirt ... and he had red hair". This must have been Gillette. The trial judge described him as having red hair.

³ Gaudet's story that she went to Lawson's barn in search of the appellant before commencing her search for him on the County Road does not fit well with her claim that the appellant had told her to keep their proposed meeting at Lawson's Bush quiet because Mr. Lawson did not like children roaming around his property.

- Burns continues walking south and meets Arnold George biking north towards the bridge two minutes later, at about 7:12 p.m., 400 feet south of the point where he encountered Gaudet.
- Burns continues walking south and shortly before 7:20 p.m., he passes the point where the road from the school ground intersects with the County Road. The appellant and Lynne have not yet come on to the County Road. Burns continues walking south and by 7:20 p.m., he leaves the County Road and walks through the playground on the east side of the school. He arrives home at almost a half-hour from when he left the bridge.

iii) George, Glover and Gaudet travel north towards the bridge

- After meeting Burns, George cycles 1200 feet north and meets Gaudet near the mouth of the tractor trail.
- Glover returns to the bridge alone after retrieving his fishing rod. On his way to the bridge, at about 7:10 p.m., he sees Gaudet and George at the tractor trail.
- Glover arrives back at the bridge before 7:15 p.m.
- George follows Glover to the bridge and arrives within one minute of Glover, by no later than 7:15 p.m.
- Gaudet follows George and arrives at the bridge within moments of George. She sees Glover at the bridge and watches George head down to the swimming hole.
- George and Gaudet speak briefly. Gaudet determines in short order that the appellant is not at the bridge and she cycles south to Lawson's barn in search of him. She passes the point where the road from the school grounds intersects with the County Road at around 7:20 p.m., and arrives at Lawson's barn a minute or so later.

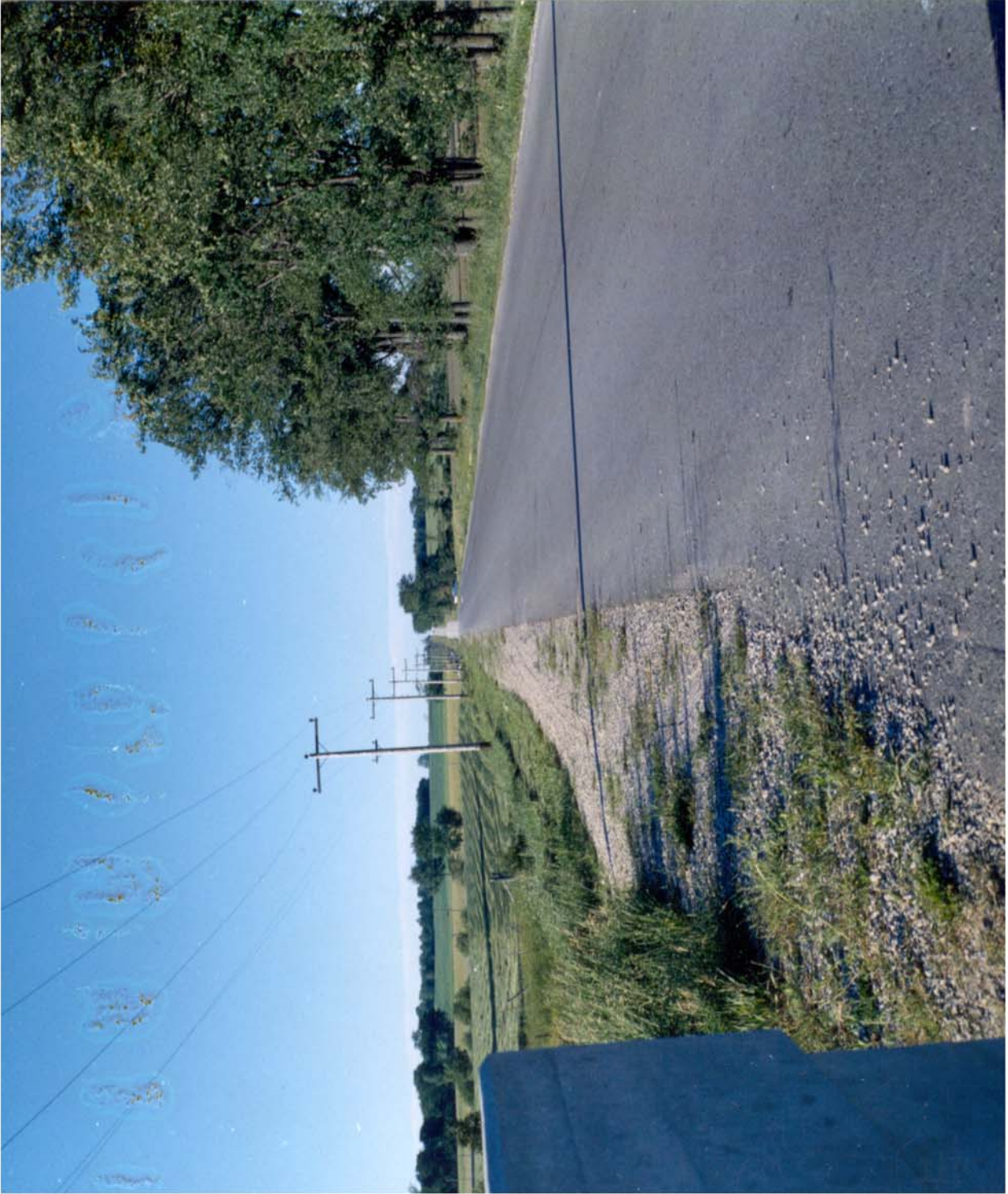
iv) The appellant and Lynne's trip north along the County Road to Highway 8

- The appellant and Lynne leave the school grounds from the west side of the school and proceed to the County Road where they get on the appellant's bicycle and ride north, within a minute or two of 7:20 p.m.

- Gellatly leaves the bridge at about 7:20 p.m. and cycles home to retrieve his bathing suit. He passes the appellant and Lynne south of Lawson's Bush, about a quarter of a mile north of the school grounds, at about 7:25 p.m.
- Lynne and the appellant proceed north on the County Road towards the bridge.
- Vandendool arrives at the river, swims and returns home before the appellant and Lynne cross the bridge.
- Lynne and the appellant cross the bridge and proceed to Highway 8. They arrive at Highway 8 shortly after 7:30 p.m.
- Gaudet leaves Lawson's barn at 7:25 p.m. and heads north on the County Road. She returns to the tractor trail and walks her bicycle along the trail for some distance (perhaps up to 300 feet) before returning to the County Road and then on to Lawson's barn.
- Gellatly returns to the bridge after retrieving his bathing suit. He does not see Gaudet on the way because she is some distance east on the tractor trail when he passes it. Gellatly arrives back at the bridge shortly after 7:30 p.m. He heads immediately to the swimming hole and does not see the appellant. The appellant, at this time, has just dropped Lynne off at Highway 8 and is about to return to the bridge.

v) The appellant's trip from the highway to the school grounds

- The appellant comes back to the bridge alone shortly after Gellatly has returned to the swimming hole.
- The appellant remains at the bridge for a short period of time before returning back to the school grounds.



APPENDIX 5

**Trial exhibits of a car located at the intersection of the County Road and Highway 8
Photograph 1 of 4 (Trial Exhibit #17)**



APPENDIX 6

**Trial exhibits of a car located at the intersection of the County Road and Highway 8
Photograph 2 of 4 (Trial Exhibit #18)**



APPENDIX 6
Trial exhibits of a car located at the intersection of the County Road and Highway 8
Photograph 3 of 4 (Trial Exhibit #19)



APPENDIX 6

**Trial exhibits of a car located at the intersection of the County Road and Highway 8
Photograph 4 of 4 (Trial Exhibit #20)**



Accurate when this print is viewed at a distance of 17 to 20 inches from the human eye.

Photographer: J. F. Stearns

APPENDIX 7
New photographs tendered on this Reference of vehicles located at the
intersection of the County Road and Highway 8
Photograph 1 of 4



Accurate when this print is viewed at a distance of 17 to 20 inches from the human eye.

Photographer: J. F. Stearns

APPENDIX 7
New photographs tendered on this Reference of vehicles located at the
intersection of the County Road and Highway 8
Photograph 2 of 4



Accurate when this print is viewed at a distance of 17 to 20 inches from the human eye.

Photographer: J. F. Stearns

APPENDIX 7
New photographs tendered on this Reference of vehicles located at the
intersection of the County Road and Highway 8
Photograph 3 of 4



Accurate when this print is viewed at a distance of 17 to 20 inches from the human eye.

Photographer: J. F. Stearns

APPENDIX 7
New photographs tendered on this Reference of vehicles located at the
intersection of the County Road and Highway 8
Photograph 4 of 4



APPENDIX 8

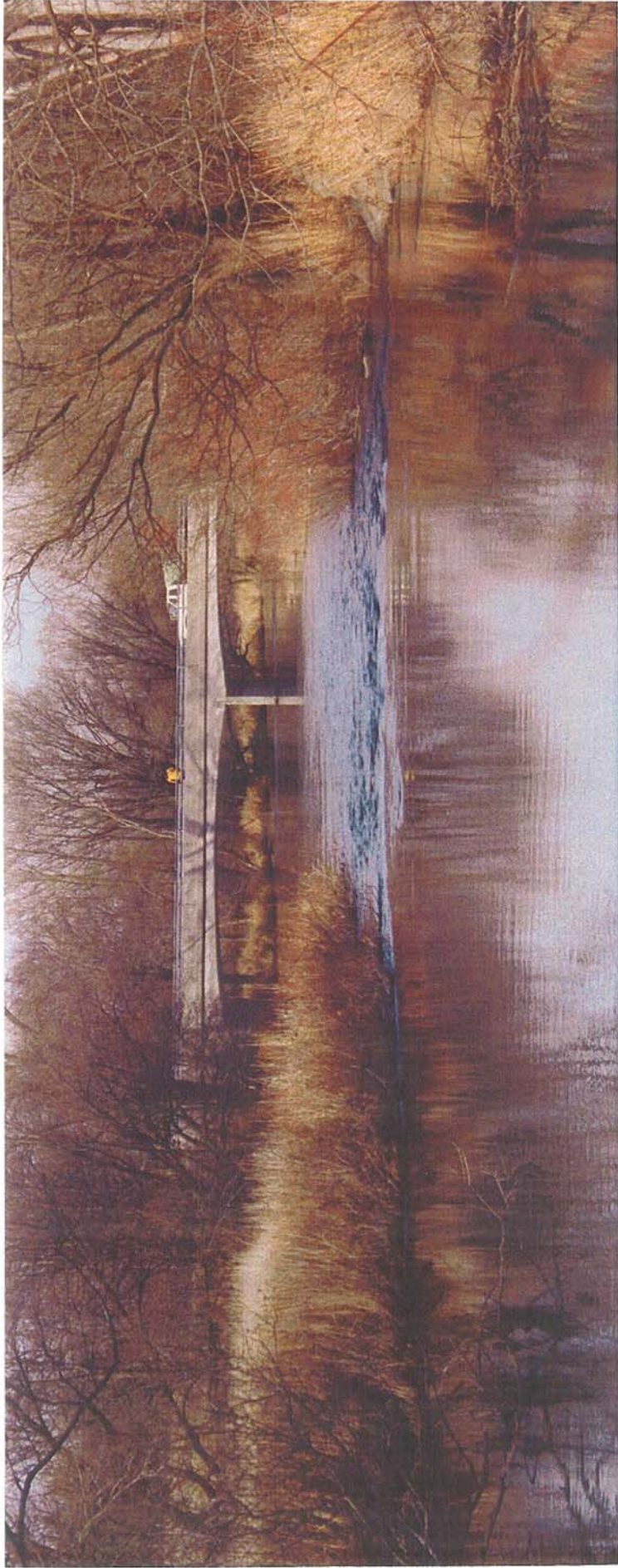
**O.P.P. photograph purporting to depict Gordon Logan's view of the bridge
tendered at the Supreme Court Reference in 1966**



Accurate when this print is viewed at a distance of 17 to 20 inches from the human eye.

Photographer: J. F. Stearns

APPENDIX 9
**New “life-sized” photographs of the view of the bridge from Gordon Logan’s
position on the rock in the vicinity of the swimming hole
Photograph 1 of 3**



Accurate when this print is viewed at a distance of 17 to 20 inches from the human eye.

Photographer: J. F. Stearns

APPENDIX 9
**New “life-sized” photographs of the view of the bridge from Gordon Logan’s
position on the rock in the vicinity of the swimming hole
Photograph 2 of 3**



Accurate when this print is viewed at a distance of 17 to 20 inches from the human eye.

Photographer: J. F. Stearns

APPENDIX 9
**New “life-sized” photographs of the view of the bridge from Gordon Logan’s
position on the rock in the vicinity of the swimming hole
Photograph 3 of 3**